

# Op-Torq

## POWER MONITORING SYSTEM

### TORQUE & POWER DATA MONITORING SYSTEM

To measure true mechanical torque and power on rotating shafts



#### Main features

- + **Convenient dashboard view**  
Provides a quick, real-time view of your system
- + **Time interval in graph mode**  
Displays last minute or last hour data on a graph
- + **Statistics and voyage specific data**  
Statistics for specific engine or overall configuration
- + **12" Marine DNV touchscreen panel computer**  
Touch screen panel computer with dimmable screen
- + **Remote support access**  
A fast and easy way to upgrade the system
- + **Engine performance reports generator**  
Adobe Acrobat® PDF and Microsoft Excel® formats
- + **DataVIEW Software**  
A PC-based Software for further data analysis

Op-Torq is designed to display, log and analyse power, RPM, torque from Binsfeld Engineering TorqueTrak torquemeters.

#### The Binsfeld Engineering's TorqueTrak Revolution

is a rugged precision instrument designed to measure torque and/or power in real time on rotating shafts of sizes up to 40 inches (1016 mm) in diameter.

Op-Torq often serves for equipment inspection, diagnostic, testing, troubleshooting and maintenance.

#### Applications include

- + Propulsion shaft torsional measurement
- + Performance monitoring
- + Remote monitoring / reporting
- + Finding the optimum engine load
- + Optimize load sharing
- + Avoid engine overloading
- + Diagnose maintenance needs

#### Monitored data

- + Shaft torque
- + Shaft revolution
- + Engine power at the shaft

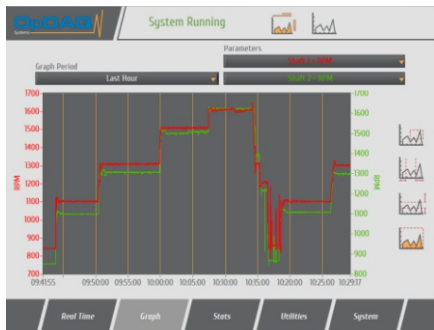
#### Additional features (options)

- + Secondary display / Wheelhouse repeater
- + Email report module



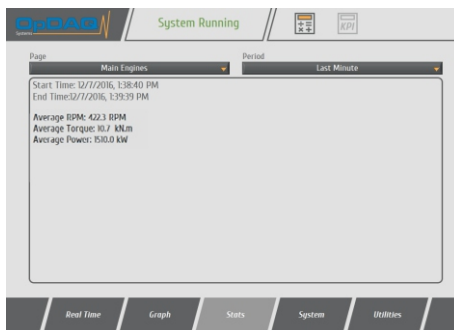
**Op-Torq**  
POWER MONITORING SYSTEM

## The right tool to assess the benefits of a new technology



## Graph display

Display of last- minute or last hour data.



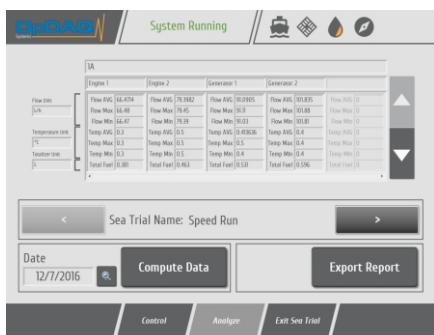
## Statistics

Gives access to calculated statistics and voyage specific data.



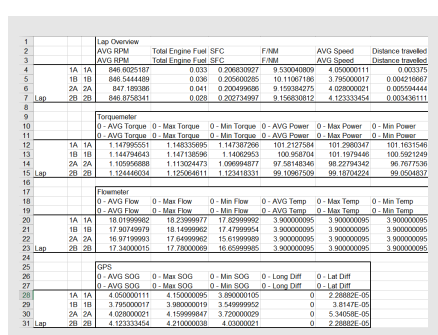
## Configuring instruments

Locked to the normal everyday user.  
Unlock it to configure the system.



## Test/Sea Trial module

Measure, compare and benchmark vessel performance. The sea trial module records lap data as easily as recording time with a chronometer.



## Data output and reports

Data output includes real-time display.  
Daily, voyage and test/sea trial reports.  
Historical data in binary or text format.

## Suggested system configuration

